

 **銘昇泵浦**  
PUMTECH 銘昇泵浦

## 臥式多段高壓泵浦 MSTH系列

### 用途：

供水應用：水廠的過濾與輸送，水管增壓，高樓建築增壓，工業給水增壓。

增壓系統：流程水系統，高壓沖洗系統，消防系統。

輸送系統：冷卻空調，鍋爐給水及冷凝水系統

水處理系統：高壓過濾系統，逆滲透系統，軟化，電解系統，蒸餾系統。

灌溉處理：土地灌溉，噴灌，滴灌。

### 特點：

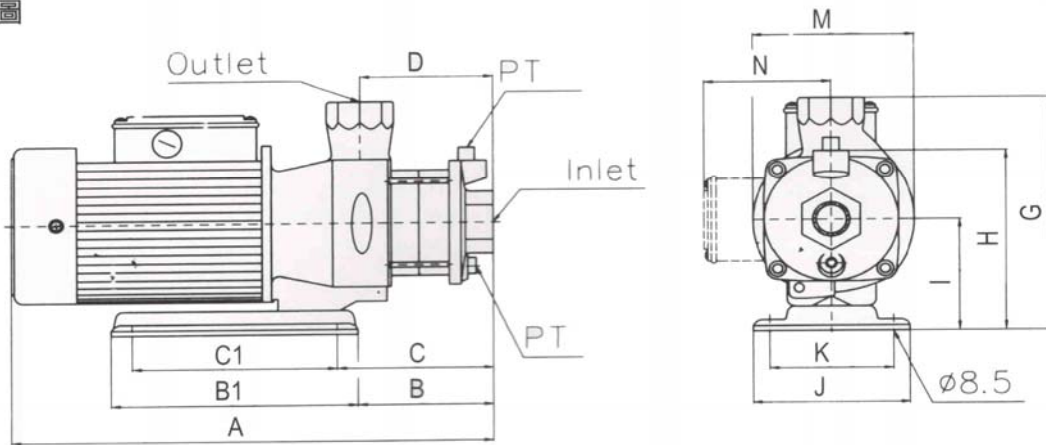
1. 臥式多段離心式泵浦，非自吸式，泵浦與馬達同軸，葉輪固定於馬達軸心上，主要動作部位零件為不銹鋼材質。
2. 馬達為全密閉型，風冷式二極標準馬達，F級絕緣，防護等級為 IP55
3. 使用條件以 環境溫度最高+40°C，  
液體溫度+0°C ~ +90°C+120°C (選配)  
工作壓力：Max. 10Kg/Cm<sup>2</sup>  
入口壓力：6Kg/Cm<sup>2</sup>

銘昇電機股份有限公司  
彰化縣社頭鄉中山路一段229巷1號  
TEL:04-8724933(代表號)  
FAX:04-8724935

### 大陸聯絡處：

昆山市開發區青陽寶島花園131棟101室  
TEL:86-512-577 21989(代表號)  
FAX:86-512-577 21969

外型尺寸圖



Flange type: Inlet\*Outlet

MSTH2 1"\*1"

MSTH4 1 1/4"\*1"

PT 3/8"

MSTH8/12 PF 2"\*2"

or PF 1 1/2" \* 1 1/2"

PT 1/2"

MSTH25 PF 3" \* 3"

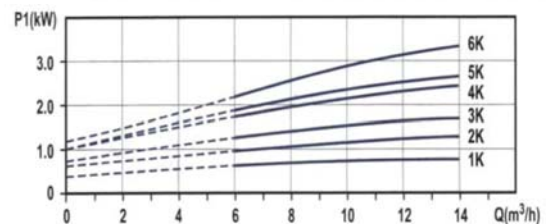
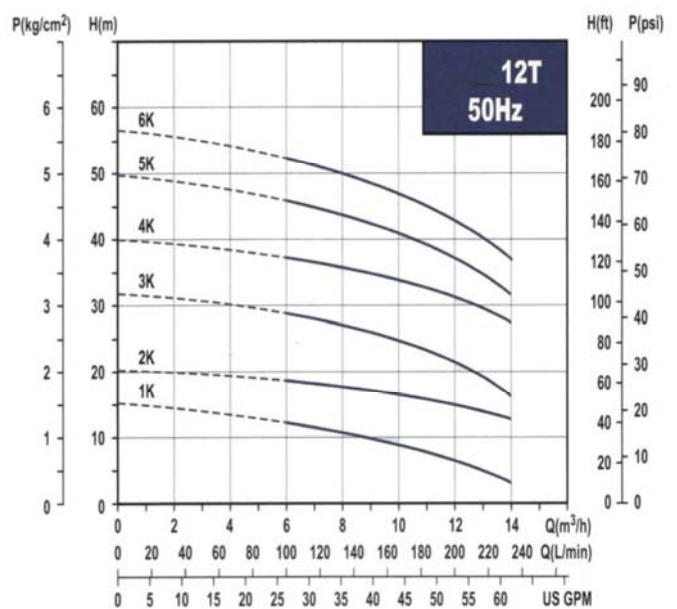
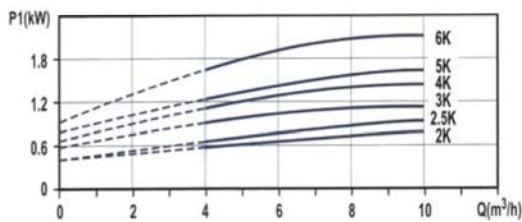
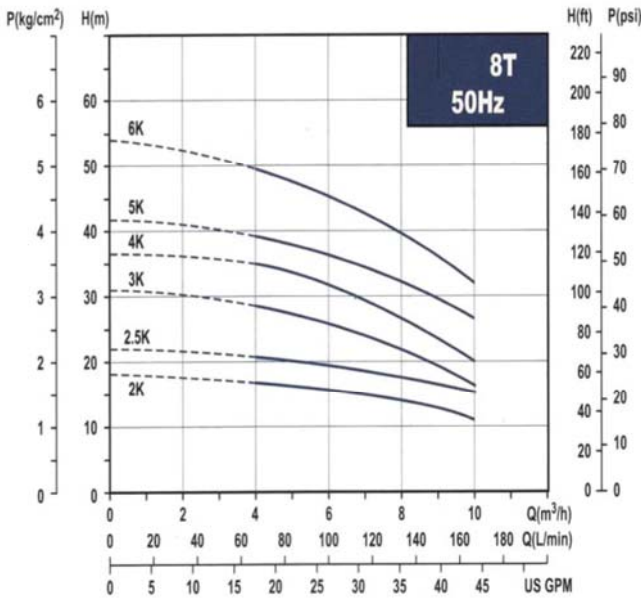
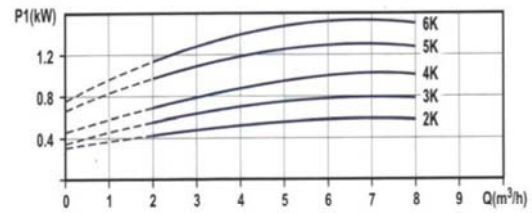
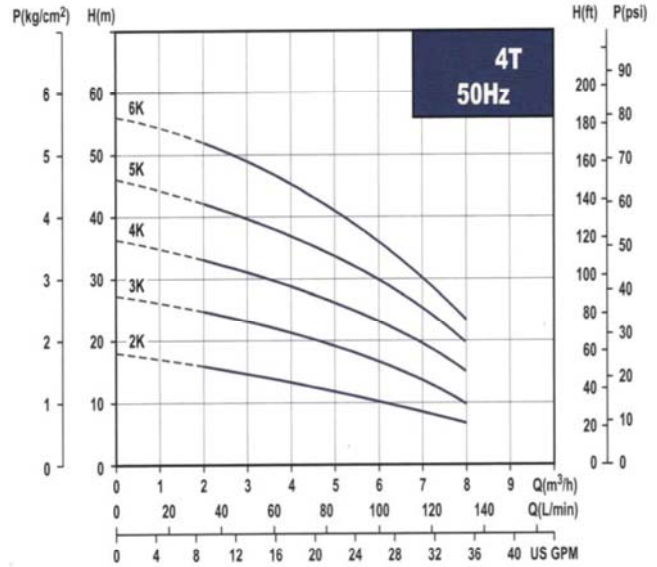
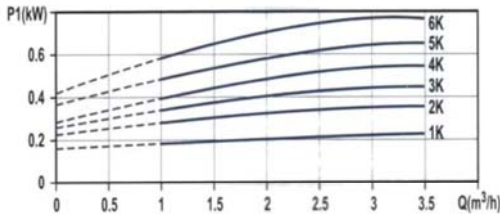
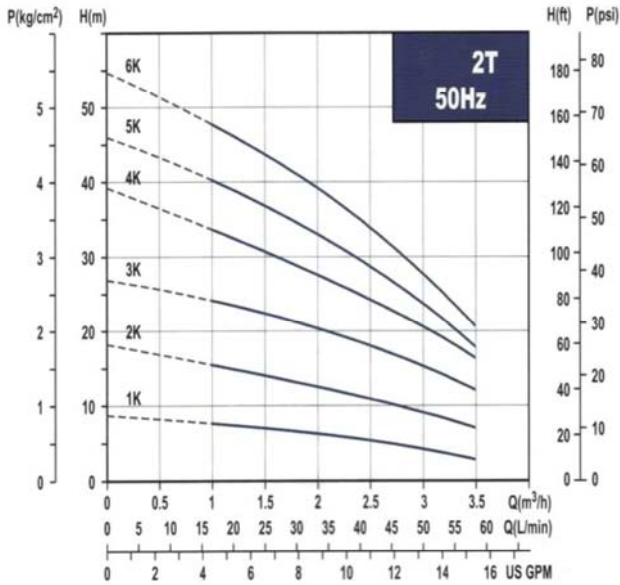
| PUMP TYPE  | PH | MOTOR POWER |      | DIMENSIONS (mm) |     |     |     |     |     |     |     |     |     |     |     |     |
|------------|----|-------------|------|-----------------|-----|-----|-----|-----|-----|-----|-----|-----|-----|-----|-----|-----|
|            |    | $\phi$      | W    | HP              | A   | B   | B1  | C   | C1  | D   | G   | H   | I   | J   | K   | M   |
| MSTH2-1K   | 1  | 450         | 0.5  | 287             | 45  | 160 | 56  | 138 | 81  | 218 | 161 | 90  | 130 | 108 | 142 | 128 |
|            | 3  | 370         | 0.5  |                 |     |     |     |     |     |     |     |     |     |     |     |     |
| MSTH2-2K   | 1  | 490         | 0.65 | 305             | 63  | 160 | 74  | 138 | 99  | 218 | 161 | 90  | 130 | 108 | 142 | 128 |
|            | 3  | 560         | 0.75 |                 |     |     |     |     |     |     |     |     |     |     |     |     |
| MSTH2-3K   | 1  | 680         | 0.9  | 323             | 81  | 160 | 92  | 138 | 117 | 218 | 161 | 90  | 130 | 108 | 142 | 128 |
|            | 3  | 750         | 1    |                 |     |     |     |     |     |     |     |     |     |     |     |     |
| MSTH2-4K   | 1  | 900         | 1.2  | 341             | 99  | 160 | 110 | 138 | 135 | 218 | 161 | 90  | 130 | 108 | 142 | 128 |
|            | 3  | 910         | 1.2  |                 |     |     |     |     |     |     |     |     |     |     |     |     |
| MSTH2-5K   | 1  | 1080        | 1.4  | 399             | 117 | 160 | 128 | 138 | 153 | 218 | 161 | 90  | 130 | 108 | 142 | 128 |
|            | 3  | 1060        | 1.4  |                 |     |     |     |     |     |     |     |     |     |     |     |     |
| MSTH2-6K   | 1  | 1420        | 2    | 417             | 135 | 160 | 146 | 138 | 171 | 218 | 161 | 90  | 130 | 108 | 142 | 128 |
|            | 3  | 1270        | 2    |                 |     |     |     |     |     |     |     |     |     |     |     |     |
| MSTH4-2K   | 1  | 880         | 1    | 314             | 72  | 160 | 83  | 138 | 108 | 218 | 161 | 90  | 130 | 108 | 142 | 128 |
|            | 3  | 960         | 1    |                 |     |     |     |     |     |     |     |     |     |     |     |     |
| MSTH4-3K   | 1  | 1250        | 1.5  | 381             | 99  | 160 | 110 | 138 | 135 | 218 | 161 | 90  | 130 | 108 | 142 | 128 |
|            | 3  | 1270        | 1.5  |                 |     |     |     |     |     |     |     |     |     |     |     |     |
| MSTH4-4K   | 1  | 1760        | 2    | 408             | 126 | 160 | 137 | 138 | 162 | 218 | 161 | 90  | 130 | 108 | 142 | 128 |
|            | 3  | 1580        | 2    |                 |     |     |     |     |     |     |     |     |     |     |     |     |
| MSTH4-5K   | 3  | 2050        | 2.5  | 435             | 153 | 160 | 164 | 138 | 189 | 218 | 161 | 90  | 130 | 108 | 142 | 128 |
|            | 3  | 2300        | 3    | 462             | 180 | 160 | 191 | 138 | 216 | 218 | 161 | 90  | 130 | 108 | 142 | 128 |
| MSTH8-2K   | 1  | 1300        | 2    | 370             | 77  | 160 | 88  | 138 | 75  | 240 | 188 | 110 | 130 | 108 | 182 | 124 |
|            | 3  | 1230        | 2    |                 |     |     |     |     |     |     |     |     |     |     |     |     |
| MSTH8-2.5K | 1  | 1720        | 2    | 407             | 109 | 160 | 120 | 138 | 107 | 240 | 188 | 110 | 130 | 108 | 182 | 124 |
|            | 3  | 1580        | 2    |                 |     |     |     |     |     |     |     |     |     |     |     |     |
| MSTH8-3K   | 1  | 1970        | 2.5  | 407             | 109 | 160 | 120 | 138 | 107 | 240 | 188 | 110 | 130 | 108 | 182 | 124 |
|            | 3  | 1770        | 2    |                 |     |     |     |     |     |     |     |     |     |     |     |     |
| MSTH8-4K   | 3  | 2400        | 3    | 435             | 109 | 160 | 120 | 138 | 139 | 240 | 188 | 110 | 130 | 108 | 182 | 124 |
|            | 3  | 2600        | 3    | 467             | 141 | 160 | 152 | 138 | 139 | 240 | 188 | 110 | 130 | 108 | 182 | 124 |
| MSTH12-1K  | 1  | 880         | 1    | 335             | 77  | 160 | 88  | 138 | 75  | 240 | 188 | 110 | 130 | 108 | 182 | 124 |
|            | 3  | 860         | 1    |                 |     |     |     |     |     |     |     |     |     |     |     |     |
| MSTH12-2K  | 1  | 2200        | 3    | 375             | 77  | 160 | 88  | 138 | 107 | 240 | 188 | 110 | 130 | 108 | 182 | 124 |
|            | 3  | 1900        | 2.5  |                 |     |     |     |     |     |     |     |     |     |     |     |     |
| MSTH12-3K  | 3  | 2900        | 4    | 435             | 109 | 160 | 120 | 138 | 139 | 240 | 188 | 110 | 130 | 108 | 182 | 124 |
|            | 3  | 4150        | 5.5  | 435             | 109 | 160 | 120 | 138 | 139 | 240 | 188 | 110 | 130 | 108 | 182 | 124 |
| MSTH25-2K  | 3  | 4000        | 5    | 538             | 159 | 280 | 199 | 200 | 120 | 320 |     | 147 | 190 | 168 | 242 |     |
|            | 3  | 5100        | 7    | 598             | 219 | 280 | 259 | 200 | 180 | 320 |     | 147 | 190 | 168 | 242 |     |
| MSTH25-4K  | 3  | 7200        | 10   | 598             | 219 | 280 | 259 | 200 | 180 | 320 |     | 147 | 190 | 168 | 242 |     |
|            | 3  | 8000        | 10.5 | 708             | 279 | 280 | 319 | 200 | 240 | 320 |     | 147 | 190 | 168 | 242 |     |
| MSTH25-6K  | 3  | 10200       | 13.6 | 708             | 279 | 280 | 319 | 200 | 240 | 320 |     | 147 | 190 | 168 | 242 |     |



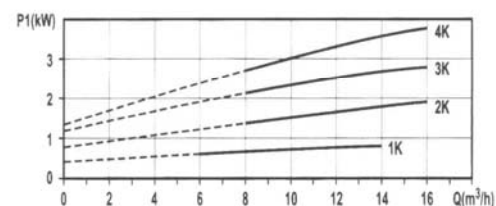
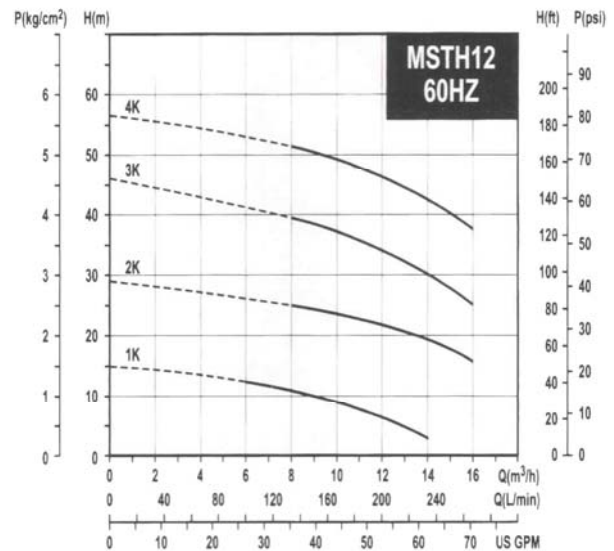
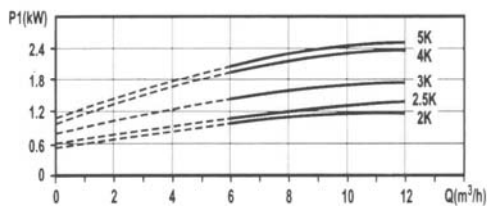
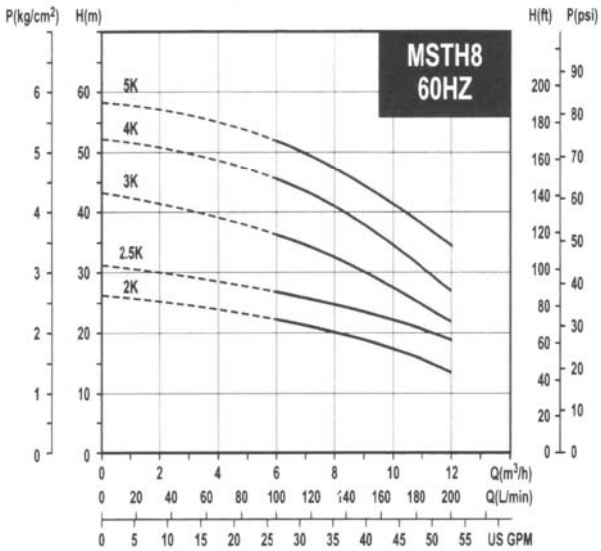
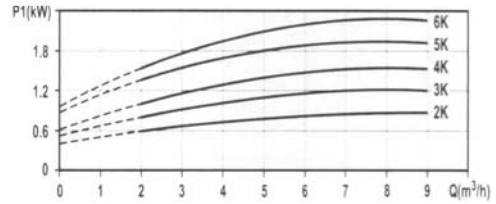
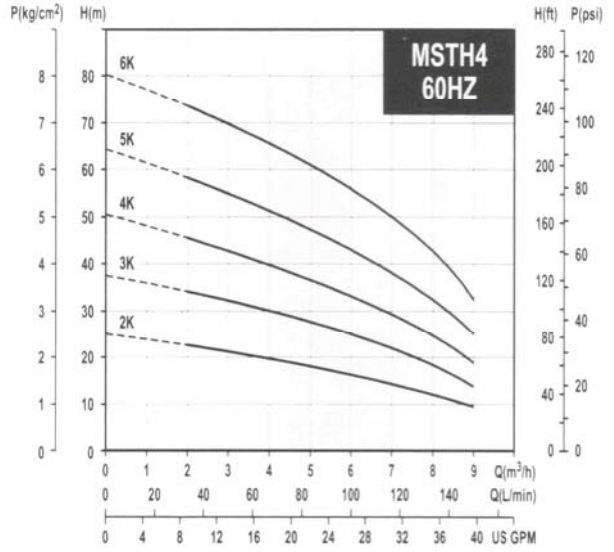
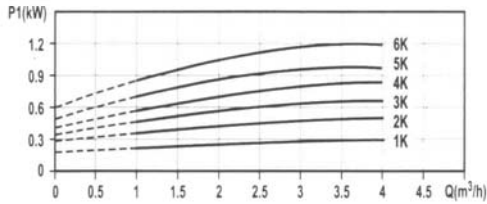
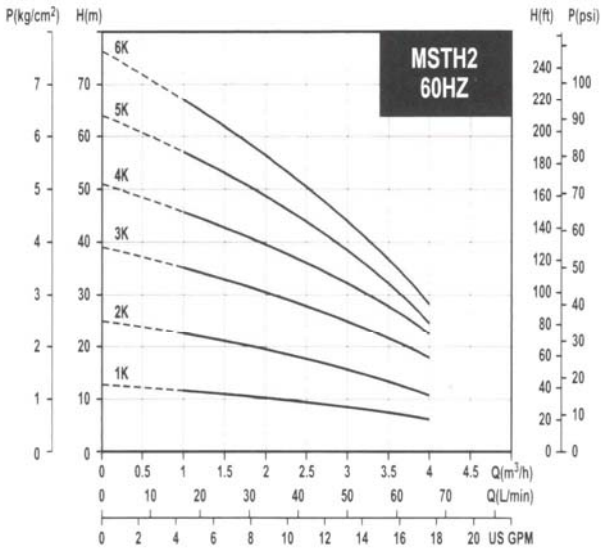
# 銘昇泵浦

## 性能曲線 Performance Curves

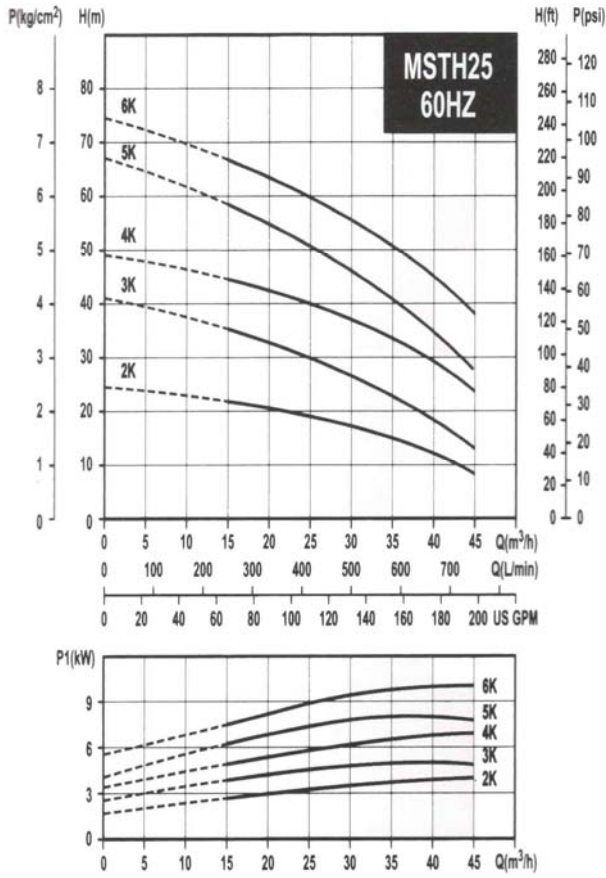
# 臥式多段高壓泵浦MSTH 50HZ系列



# 性能曲線 Performance Curves

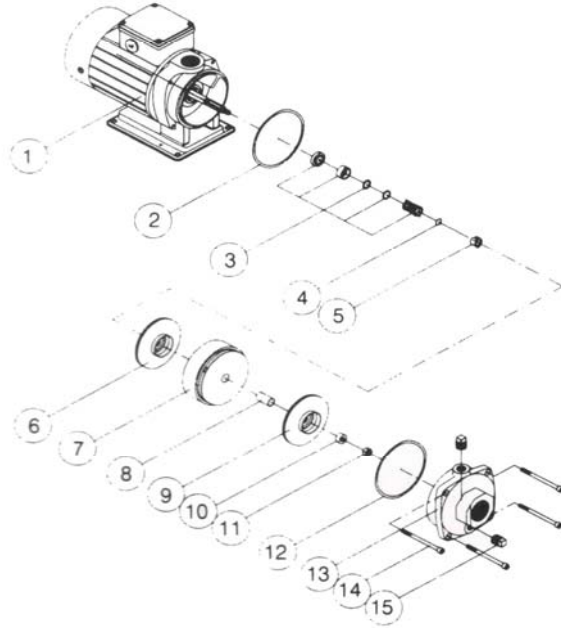


## 性能曲線 Performance Curves

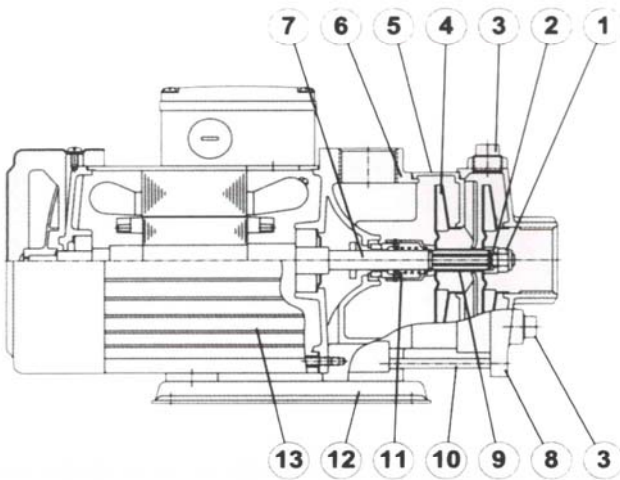


## 泵浦示意圖

- |                    |                  |                |
|--------------------|------------------|----------------|
| 1. MOTOR           | 6. IMPELLER      | 11. LOCK NUT   |
| 2. GASKET          | 7. DIFFUSER      | 12. GASKET     |
| 3. MECHANICAL SEAL | 8. SHAFT SLEEVE  | 13. PUMP COVER |
| 4. C-RING          | 9. IMPELLER      | 14. BOLT       |
| 5. SHAFT SLEEVE    | 10. SHAFT SLEEVE | 15. PLUG       |



## Sectional drawing



## Materials

| No. | Part name            | Material                     |          |
|-----|----------------------|------------------------------|----------|
|     |                      | Standard                     | S series |
| 1   | Lock Nut             | SUS 316                      | SUS 304  |
| 2   | Sleeve (Shaft End)   | SUS 316                      | SUS 304  |
| 3   | Water Plug           | FC 20                        | SUS 304  |
| 4   | Impeller             | SUS 304                      | SUS 304  |
| 5   | Intermediate Chamber | SUS 304                      | SUS 304  |
| 6   | Pump Casing          | FC 20                        | SUS 304  |
| 7   | Shaft                | SUS 304                      | SUS 304  |
| 8   | Suction Chamber      | FC 20                        | SUS 304  |
| 9   | Sleeve               | SUS 316                      | SUS 316  |
| 10  | Stud Bolt            | SCM 435                      | SUS 304  |
| 11  | Mechanical Seal      | Silicon Carbide+Carbon+Viton |          |
| 12  | Mounted Base         | Coating Steel                |          |
| 13  | Motor Shell          | Aluminum alloy               |          |